

# พาเนลพีซีอุตสาหกรรม

## Industrial Panel PC with Touch Screen

# UTC-S1972A

19 inch Industrial Panel PC



### Features

- Aluminum die-casting chassis, fanless design
- Wireless Design
- 19 inch LED TFT LCD, capacitive touch
- Intel Celeron J6412 2.0-2.6G CPU
- 6\*COM, 2\*LAN, 4\*USB3.0, 2\*USB2.0
- AT & ATX Model
- Front Panel IP65 Level
- DC 9~36V power input optional



UTC-S1972A is an intelligent, fanless panel PC, 19" Panel PC equipped with an Intel® Baytrail-D Celeron J6412 processor. Meeting the demands of harsh environments, in addition, the dual GbE LAN, 6 x serial ports, 6 x USB ports, make device connection and integration easy.

### Specifications

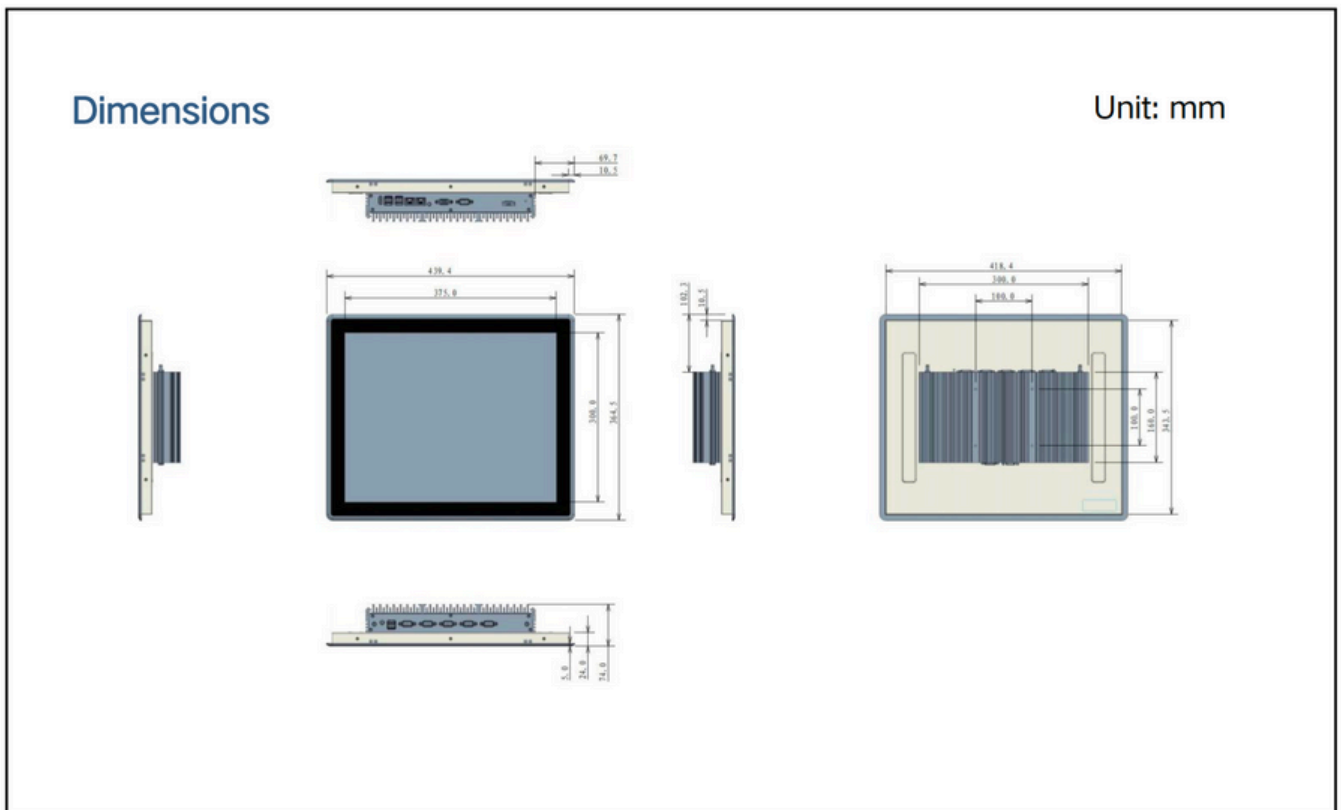
Processor	CPU	Intel Baytrail-D Celeron J6412, 2.0~2.6GHz, 4cores, 4threads, 2M cache, 22nm,TDP 10W	
	Cooling System	Fanless	
	Memory	Single Socket, 4GB-8GB DDR3L	
	Storage	mSATA SSD Full Size+SATS 2.5"SSD	
	I/O ports		USB: 4xUSB3.0+2xUSB2.0, Type-A COM: 6xRS232, DB9, 2*RS485/RS422 optional
			Dual Display: 1xHDMI (1920*1200 @30Hz) 1*VGA (1920*1200 @30Hz)
			Audio: 1xMic-in, 1x Line-out Expansion: MINI-PCIE
Network(LAN)	2x 10/100/1000Mbps Ethernet		
Input Voltage	Input Voltage	12V DC (3 Pin Phoenix Connector) , optional 9V-36V DC	
LCD Display	Display Type:	19 inch TFT LED Panel( LED Backlight)	
	Max. Resolution:	1280x1024 / 4:3	
	Luminance(cd/m <sup>2</sup> )	300nits	
Touchscreen	Touch Type	Capacitive Touch	
OS Support	OS Support	Microsoft Windows 7/ Windows 10/Windows 11/ Linux	



# พาเนลพีซีโครงอุตสาหกรรม

## Industrial Panel PC with Touch Screen

Environment	Operating Temperature	0°C ~ 50°C (14 ~ 140 °F) (extend temperature optional)
	Storage Temperature	-10°C ~ 60°C (-4 ~ 158 °F)
	Front Panel Protection	IP65 compliant
Mechanical	Dimensions	439.4x364.5x74mm Cutout Size: 418.4*343.5mm
	Weight	8.3 KG N.W.
	Color	Black
	Material	Aluminum + SUS
	Certification	CE / RoHS
Custom Service	Custom Service	Custom BIOS, System Encryption, Custom LOGO



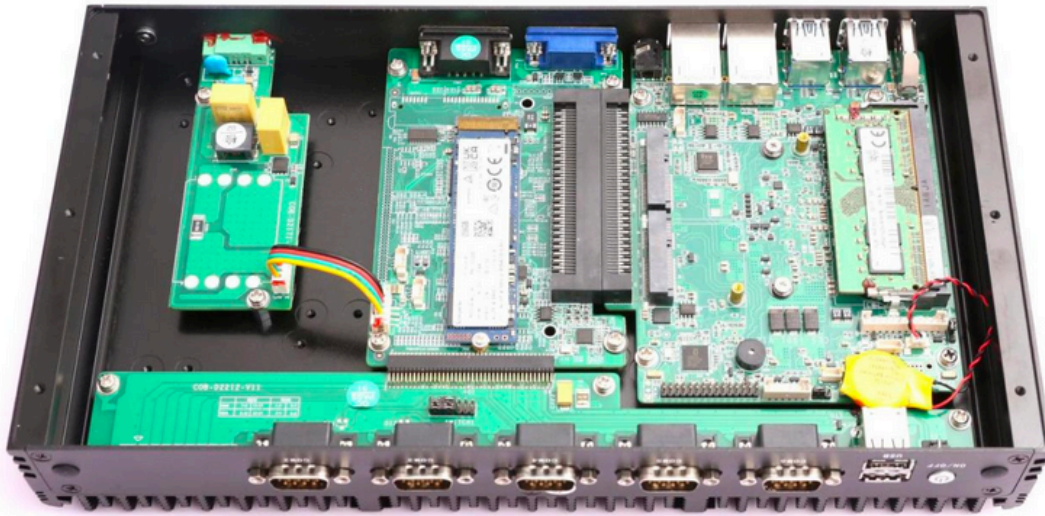
# พาเนลพีซีอุตสาหกรรม

## Industrial Panel PC with Touch Screen



# พาเนลพีซีอุตสาหกรรม

## Industrial Panel PC with Touch Screen



- Cable-less design and Board to Board design
- Highly compatible
- Modular design
- Easy operation: easy assembly and easy Maintenance
- Supports customization

Packing List	Ordering Information
1x UTC-S1972A	UTC-S1972A-J6412 CPU
1x Power Adapter	Operating Systems
Optional accessories	WIN7 32bit 64bit ENG/CN
VESA Bracket	WIN10 32bit 64bit ENG/CN
Power Cable 3-pin 200cm	WIN11 32bit 64bit ENG/CN
	Linux Ubuntu 12.04/16.04/18.04

